

# **WEL COME TO WESTERN RAILWAY**

## **RATLAM DIVISION**

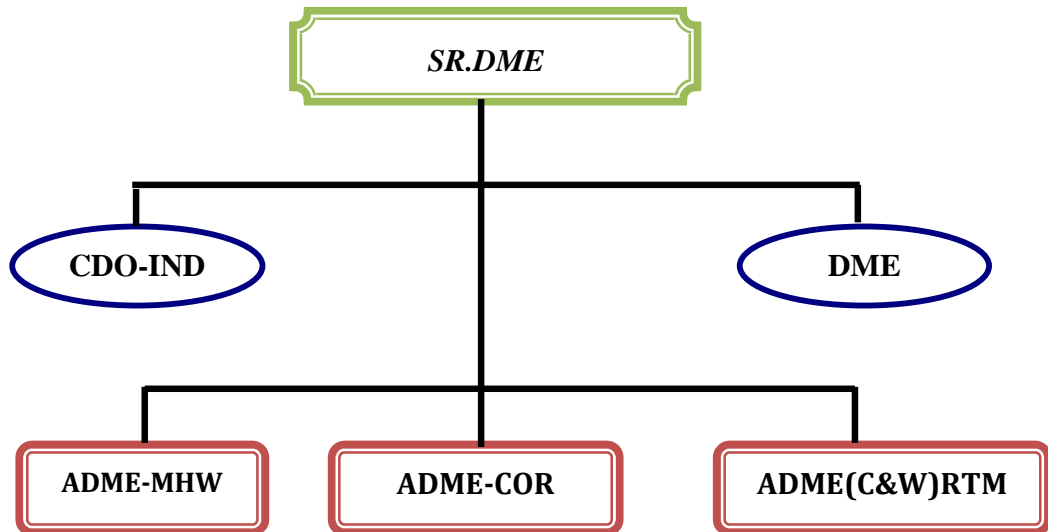
### **MECHANICAL DEPARTMENT**

1. Mechanical activity centre on RTM Division.
2. Organization
3. Sanctioned staff strength.
4. Coaching Activity:  
Coaching Depot-IND (BG)  
Coaching Depot-RTM(BG)  
Coaching Depot-MHW (MG)
5. Wagon Activity:  
Wagon Depot Down Yard-RTM  
Wagon Depot-SMP
6. Other C&W Units:  
C&W Unit-COR  
C&W Unit-UJN  
C&W Unit-DHD
7. C&W Training Centre-UJN
8. Accident Relief Equipment & Medical Van:  
RTM            UJN            COR            MHW
9. Crew Lobby-COR & MHW
10.        Running Room-COR
11.        Weigh Bridges
12.        Railway Consumer Depot(RCD)  
              RTM            UJN            COR            MHW
- 13        Photo gallery

# 1. Mechanical Activity Centre on RTM Division.



2. **Organization:** Mechanical department is headed by Sr.DME/RTM with assistance of Two Sr. Scale Officers and three assistance officers.



3. **SANCTIONED STAFF STRENGTH ( CADRE)**

Activity	Group "C"	Group "D"	Total
Carriage & Wagon	635	538	1173
Loco Fitting (Merged in C&W)	69	37	106
<b>Total</b>	<b>704</b>	<b>575</b>	<b>1279</b>

4. **Coaching Activity:** On RTM Division coaching depot IND and coaching depot RTM is engaged in maintenance of BG trains, coaching depot MHW undertakes maintenance of MG trains based at RTM Division. Also mechanical department on RTM division is nodal agency for maintenance of fire extinguisher.

Coaching Depot IND (BG)  
Coaching Depot RTM (BG)  
Coaching Depot MHW (MG)

**A) Coaching Depot INDORE (BG)**

- i) **Activities:-** Coaching depot IND was commissioned in Feb-1995. Since then, there has been periodical enhancement in activities and coach holding. At present the depot has coach holding of 485 coaches and sanctioned cadre of 393 posts.

**The depot undertakes:**

- Primary maintenance of 15 trains.
- Secondary maintenance of 2 trains.
- (STR) platform return 19 trains.
- IOH & repair of coaches in sick line.
- Operation of mechanized Laundry.
- Maintenance of Weigh Bridge at MGG.
- T.No. 19301/02 (IND-YPR), 12919/20 (IND-JAT Malwa), 22912/13 (IND-HWH), 19313/14 & 19321/22 (IND-PATNA) based at IND are provided with OBHS facility.
- ISO 9001:2008 certified IND based trains:  
19309/10 IND-GNC Shanti Exp.  
12920/19 IND-JAT Malwa Exp.  
19312/13 IND-PUNE Exp.  
19325/26 IND-ASR Exp

ii) **Infrastructure (IND):**

Sick line covered shed	-108x16.5mtrs.
Washing pit line	-03 (24 Coaches length)
	-01 (09 Coaches length)
EOT Crane	-02 sets 10/3 T capacity
Mechanized Laundry	-01 T Capacity
Electric Air compressor	-350cfm
Diesel Air compressor	-250cfm
H.P.Jet machine	-04Nos.

Synchronized Jack	-15 T 02 sets
Utility vehicle	-01 Nos.

### **B) Coaching Depot-RTM (BG):**

**Activity:** Coaching depot situated on Delhi-Mumbai Rajdhani Route. Situation of depot become very important as it is the only C&W depot between KTT and BRC. The coach holding of coaching depot RTM is 63 coaches and having sanctioned cadre of 159 for coaching activities.

Coaching depot RTM undertake:

- Primary maintenance of 01 passenger train and 02 DEMU trains
- Platform return (STR) trains-10 Nos.
- Enroute (STR) trains -10Nos.
- Enroute platform attention through passing trains- 51 pairs of trains.
- Maintenance of inspection carriage-01No.
- Repair of coaches in sick line

### **Infrastructure (RTM P.Yd.):**

- Covered shed for sick line and ART.
- Washing cum pit line-02Nos (10 coaches length)
- H.P.Jet Plant-02Nos.
- Air compressor-350cfm

### **C) Coaching depot MHW (MG):-**

**Activity:** Coaching depot MHW is the only MG coaching depot, which is maintaining MG rakes running in IND-AK isolated MG section. The coach holding of coaching depot MHW is 157 coaches and having sanctioned cadre of 168 for coaching activities.

Coaching depot MHW undertake:

- Primary maintenance - 04 trains
- Platform return (STR) -06 trains
- Enroute platform attention through passing trains-06 pairs of trains
- Maintenance of Inspection carriage-01 No.
- "C" Schedule and repair of coaches in sick line.

**Infrastructure:**

Sick Line Covered Shed	-	65x16mtrs
Washing cum pit line	-	01 (11 Coaches length) 01 (14 Coaches length)
Fork lift	-	03 T Capacity
Electric Hoist	-	03 T Capacity
Vacuum Exhauster	-	02 Nos.
Synchronized Jack set	-	15 Tone Cap.
Electric arc Welding Machine	-	04 Nos.

**5. Wagon Activities**

Wagon repair depot Down Yard-RTM

Wagon Depot SMP

Wagon depot Down yard-RTM and wagon depot SMP are engaged in repair and maintenance of BG goods stock on RTM division.

1. RTM Division has following important private sidings BCW Chanderiya, Adiyta Cement SMP, Vikram Cement JWO, JK Cement NBH, Wonder Cement GRF, Hindustan zinc Ltd CNA. The goods stock maintained at SMP and Down Yard is utilized by operating department for transportation of commodity to and from these sidings as well as outside the division as per traffic requirement. Also mechanical department on RTM division is nodal agency for maintenance of fire extinguisher.

**5 (A) Wagon Depot Down Yard RTM:**

Activity

Infrastructure

**Activity:** Wagon depot Down Yard is one of the oldest wagon depot. Now it is a ROH depot for BCNHL wagon with sanction cadre of 149 posts.

- ROH of BCNHL wagons-Target 90 wagons /month.
- ROH of departmental Air brake stock.
- CC examination of BTCS rake.
- Intensive examination of departmental stock.
- Repair of wagons in sick line.
- Maintenance and upkeep of ART/ARME based at RTM.
- Deployment of staff on RTM station as "Hanging part Gang" to detect unusual/unsafe wagons in up goods trains.

- Fabrication of necessary spare parts of locking arrangement of BCNHL wagons for wagon depot SMP.

**Infrastructure:**

Sick line covered shed	-	45x19Mtr
Yard Examination line	-	02 nos. with pathway
EOT Crane	-	15/5 T
Road Mobile crane	-	10/3T
Diesel Air Compressor	-	02 sets
Elect. Air Compressor	-	01 set
Road Truck	-	10T capacity
Welding machine	-	06Nos.
Combined shearing, punching, Gapping and notching machine	-	01 No.
Fork Lift Truck	-	03T Cap.
Diesel Generator Set	-	25 KVA
Radial Drill Machine	-	01 No.

**5(B). Wagon Depot SMP:**

**Activity:** Wagon Depot SMP is situated on RTM –COR BG section of RTM division. Wagon depot SMP is the only wagon depot to handle the work of rake examination to fulfill the requirement of private sidings in COR area. Wagon depot SMP is first on Western Railway to start Close Circuit Examination of newly designed BCNHL wagons. These rakes are named as "PADMINI". The average holding of BCNHL close circuit rakes based at SMP varies between 50 to 100. The sanctioned cadre of wagon depot is 165.

**Following work is undertake at wagon depot SMP:**

Close Circuit Examination of BCHNHL rakes  
 Premium examination of BCNHL & other air brake stock.  
 Intensive examination of Air brake wagons.  
 Repair of wagons in examination yard.  
 Repair of wagons in sick line.  
 Maintenance of Weigh Bridge at SMP.

**Infrastructure (SMP):**

Sick line Covered Shed	-	36x18Mtr
Yard Examination lines	-	02Nos. for CC & Premium

		01 for intensive examination
Pathway on examination line	-	Available
EOT Crane	-	15/5 T
Fork lift Truck	-	3 T Cap.
Diesel Generator set	-	35KVA
Diesel Air Compressor	-	02Nos.
Air Plasma Cutting machine	-	02 Sets
MIGMAG welding machine	-	02 Sets

## **2. Other C&W units:**

C&W unit-COR

C&W unit-UJN

C&W unit-DHD

**6A. C&W Unit-COR:** COR is important point for C&W examination of trains at platform. The sanctioned cadre for C&W activity at COR is 70. C&W unit COR attends:

- Platform return (STR) -01 train.
- Enroute platform attention through passing trains-26 pairs of trains
- Attending Two Special trains namely POW & ROW.
- Maintenance of Weigh Bridge located at CNA.
- Maintenance and manning of ART/ARME based at COR.

**6B. C&W Unit UJN:** UJN is a important station where C&W staff is deployed for following activities:

- Maintenance and manning of ART/ARME based at UJN.
- Round the clock trouble shooting gang at platform.
- Watering of 14 trains.
- Attending cleaning of 03 platform return trains.
- Divisional Training Centre UJN is run by C&W supervisors of UJN.
- Tower wagon fitness, line calls.

**6C. C&W Unit DHD:** Tool van equipped with HRE is deployed at DHD to attend the unusual cases for immediate relief. DHD-GDA section has so many curves and gradients and thus known to be a accident prone section on Western Railway. C&W unit DHD has a sanctioned cadre of 13 posts. DHD tool van and staff have so many times proved their utility by providing quick response by attending unusual and ensured safe and punctual running of trains.

## **3. Training Centre UJN**



Courses conducted  
Infrastructure  
Model available

### **C&W Training Center UJN**

Training is a tool to improve the efficiency and to gain higher productivity. On RTM division C&W training centre UJN is run by supervisors of C&W unit UJN.

The vision and mission of C&W training centre is to educate and update knowledge of C&W staff for safe sunning of coaches and wagons.

#### **7(A). Course conducted:**

- 15 days refresher course for C&W Technicians.
- 15 days refresher course for C&W Khalasis.
- Special Course- As per Programme given in training of Apprentice JE, Apprentice ALP and Traffic staff.
- Initial course- One week course on fresh appointment.
- Pre selection course - Training staff belong to SC/ST for promotion /selection to higher grades as ordered time to time.

#### **7(B). Infrastructure:**

1. One Class room of seating capacity 16.
2. One Model Room.
3. One covered shed for model.
4. Hostel with 4 Rooms (16 beds) .
5. Library having 26 manuals and technical books.

#### **7(C). Models Available:**

- Resetting of alarm chain signal on Air brake system.
- Connections to connect FP to BP and vice-versa for single pipe working.
- ICF Bogie BMBC.
- Different parts of ICF Bogie.
- Model of Air Bk. System.
- Cut off Angle Cock BP & FP
- BMBC for wagons.
- Model of SAB.
- Model of BG Draw & Buffing gear.
- Model of Empty load Device.

- Wheel sets with various defects.
- Spring sets for CASNUB Bogie.
- CBC Screw coupling & Transition coupling parts.
- Adopters Narrow Jaw/Wide Jaw.
- All type of Brake Blocks.
- Tank Wagons AUDCO Valve.

#### 4. Accident Relief Equipment and Medical Van

S. No.	Location	ARME		ART			Beat
		Scale	Composition	Class	Crane	HRE	
1	RTM(BG)	I	Medical Van & Auxiliary Tool van	A	140T (Diesel) modified GOTTWALD	MFD	NAD to GDA
2	UJN(BG)	I	Medical Van & Auxiliary Tool van	B	-	LUKAS	IND-UJN-NAD-BPL
3	COR(BG)	I	Medical Van & Auxiliary Tool van	B	-	BEMCO	-
4	MHW(MG)	I	Medical Van & Auxiliary Tool van	A	35T Diesel Fired Steam Crane	MFD	IND-KNW
5	DHD(BG) Tool van	Not provided		C	-	LUKAS	MGN-GDA

Location	List of main equipment	Availability in
8(A)  RTM	Inflatable Lighting tower	ART & ARME
	Gas Cutting Equipment	ART & ARME
	Electric operated cutting tools	ART & ARME
	Battery operated window bar cutter	ART & ARME
	Self contained breathing apparatus	ART & ARME
	Inflatable Air Bag	ART & ARME
	Digital Video & Still Camera	ART & ARME
	Wheel Skate for seized Roller Bearing	ART
	Inflatable Tent	ARME
8(B)  UJN	Inflatable Lighting Tower	ART & ARME
	Gas Cutting Equipment	ART & ARME
	Electric Operated cutting tools	ARME
	Battery operated window bar cutting	ARME
	Wheel skate for seized roller	ART
	Digital Video & Still Camera	ART
	Inflatable tent	ARME

	Walkie-Talkie & VHF sets	ART

<b>8(C)</b> COR	Inflatable Lighting Tower	ART&ARME
	Gas Cutting Equipment	ART&ARME
	Digital Video & Still Camera	ART&ARME
	Self contained breathing apparatus	ART
	Inflatable tent	ART
	Walkie-Talkie & VHF sets	ART
<b>8(D)</b> MHW	Inflatable Lighting Tower	ART&ARME
	Inflatable Air Bag	ART&ARME
	Gas Cutting Equipment	ART&ARME
	Self contained breathing apparatus	ART
	Inflatable tent	ART
	Digital Video & Still Camera	ART
	Walkie-Talkie & VHF sets	ART

## **5. CREW LOBBIES**

Crew Lobby COR and MHW are under mechanical department on RTM Division.

### **9(A) Crew Lobby COR:**

- Crew lobby COR is a BG integrated crew lobby.
- Classification of lobby is "A" Class.
- Lobby looked after by one chief crew controller and 04 crew controllers.
- Established as crew friendly lobby.
- CMS facility is available with 02 KOISK, 02 Monitor, 02 Printers and 01 UPS of 6.5KVA.
- Lobby is provided with CCTV camera for monitoring of Sign on/Off activity, Breath analyzer test of LPs etc.
- Air conditioned ambience.
- 04Nos. of Breath analyzer equipments are available.

### **9(B): Crew lobby MHW:**

- Crew lobby MHW is a MG crew lobby.
- Classification of Lobby is "A" Class.
- Lobby looked after by one Chief Crew Controller & 04 Crew Controllers.
- Established as crew friendly lobby.
- Lobby is provided with CCTV camera for monitoring sign On/Off activity and breath analyzer test of LPs etc.
- 03 Nos. of breath analyzer equipment are available.

## **6. Running Room COR**

On RTM Division Running Room COR is under Mechanical Department. The Running Room COR is utilized by train crew of HQ AJMER, UDAIPUR, KOTA & RATLAM. Running Room COR has awarded with shield for "Best maintained Running Room" on W.R. for year 2013-14.

## **10(A) Basic Facility:**

- "A" Category Running Room certified with ISO 9001:2008.
- 19 nos. of rooms.
- 74 beds with individual locker facility.
- Facility of subsidized meal.
- Managed on contractual basis.
- Computerized reception counter.
- Standby power arrangement is available.
- Good quality fresh linen is provided to each occupant.
- Facility of mosquito net /repellent in available.
- Kitchen with good quality stainless steel utensils.
- Separate Veg & Non-veg kitchen.
- Well furnished dining hall.
- Provision of Fly catcher in dining hall.
- Meditation Room.
- Provision of Desert cooler in each room.
- Facility of Railway Phone (48333) and P&T Phone (249040).

## **10 (B) Special Features:**

- Nicely maintained garden with Lawn area.
- Provision of water fountain with lighting arrangement in lawn area.
- Provision of Garden Umbrella with chairs.
- 12Nos. of CCTV are installed in Running Room.
- Washing machine with drier.
- Electronic Iron with ironing board.
- Facility of massage chair.
- Kitchens have facility of Mixture Grinder, Refrigerator, Microwave Over, Electronic Chimney, Electric Fly Catcher.
- Facility of hand drier and music system in Dining hall.
- Availability of Aqua-guard with Water cooler.

- Solar Water heater plant with standby arrangement of 03 electric geysers.
- Shoe polishing machine.
- Facility of cloth drying stainless stands.
- Recreation room with Carom Board & Chess Board.
- Well maintained reading room with facility of 06 Magazines and 03 Daily News Papers.

## **7. WEIGH BRIDGE**

Three weigh bridges of Railway are installed in RTM division. The mechanical department bears the responsibility of its maintenance and ensures uninterrupted working.

<b>S. No.</b>	<b>Location of weigh bridge</b>	<b>Make</b>	<b>Date of Commissioning</b>
1	MGG	Shank Process India Pvt. Ltd.	29.04.2007
2	CNA	Rice Lake Weighing system India Ltd.	20.03.2007
3	SMP	Digital Weighing system Pvt. Ltd.	26.06.2012

## **8. RAILWAY CONSUMER DEPOT (RCD)**

### **12 (A). RCD-RTM**

Commission-	27.02.1981
Company	IOCL- BANGROD
Location-	Pass. Yard, Near PL.7

#### **Facilities-**

Capacity-	270KL (3x70) Horizontal (Above ground)
Daily Issue-	37.4KL (Through Flow meters)
Decanting Point	By Road=01. By Rail=03
Fuelling point	UP side=11 ,DN side=07

#### **Safety-Provision for firefighting-**

- 1) Fire extinguisher (DCP 11 Nos10Kg + 01No75Kg.+ Co<sub>2</sub> 01 No.05Kg)
- 2) Sand bucket
- 3) Sand pit
- 4) Fire bell
- 5) Hooter(Manually)

Fire fighting training-	All staffs Trained.
Display board-	Tel. No. Fire brigade, Police, RPF, Civil/Rly. Hospital &all concern officer, supervisor's.
Road approach	Available

## 12(B). RCD-UJN

Company **HPCL-Mangliya Gaon, Indore**  
Location- Platform No.8, Left side RTM end.

### **Facilities-**

Capacity- 350KL (5x70)Horizontal (Above ground)  
Received- By Road from Mangliya Gaon, Indore  
Issue- Through Flow meters  
Decanting- By Road=02. By Rail=10  
Fuelling point UP side06, DN side06, DEMU02,  
MG02(Only Dn side working)

### **Safety-Provision for firefighting-**

- 1) Fire extinguisher (DCP 05 Nos 10Kg, 01 No. 50Kg.)
- 2) Sand bucket
- 3) Hooter (Electrical)

Fire fighting training- Training given to all staff  
Phone No. display board- Fire brigade, Police control, RPF control, Civil/Rly. Hospital & other concern officer & supervisor.

Availability of road approach of RCD- Available



## 12(C). RCD-COR

Name-	RCD -COR
Commission-	10.07.1983
IOCL Company	COR
Location-	Near PF 5

### **Facilities-**

Capacity-	505KL ,(4x70)Horizontal (Above ground) + (1x225)Vertical
Received-	By Road from COR
Issue-	Through Flow meters
Decanting-	By Road=02. By Rail=10
Fuelling point	UP side=10 ,DN side=10

### **Safety-Provision for firefighting-**

- 1)Fire extinguisher (DCP 10 Nos05Kg + 4No10Kg. )
- 2)Sand bucket
- 3)Sand pit
- 4)Fire bell

Fire fighting training-	Training given to all staff
Phone No. display board-	Fire brigade, Police control, RPF control, Civil/Rly. Hospital & other concern officer & supervisor.

Availability of road approach of RCD- Available

## **12(D). RCD-MHW**

Name-	RCD -MHW
Commission-	28.11.1992
IOCL Company	Mangliya Gaon, Indore
Location-	Near C&W Depot

### **Facilities-**

Capacity-	280KL (4x70)Horizontal (Above ground)
Received-	By Road from Mangliya Gaon, Indore
Issue-	Through Flow meters
Decanting-	By Road=02.
Fuelling point	Goods Yard3+2 Diesel Shede06,DN side 06 DEMU02,MG02(Only Dn side working)

### **Safety-Provision for firefighting-**

- 1) Fire extinguisher (DCP 05 Nos10Kg,01No.50Kg.)
- 2) Sand bucket
- 3) Hooter (Electrical)

Fire fighting training-	Training given to all staff
-------------------------	-----------------------------

Phone No. display board-	Fire brigade, Police control, RPF control, Civil/Rly. Hospital & other concern officer & supervisor.
--------------------------	------------------------------------------------------------------------------------------------------------

Availability of road approach of RCD- Available

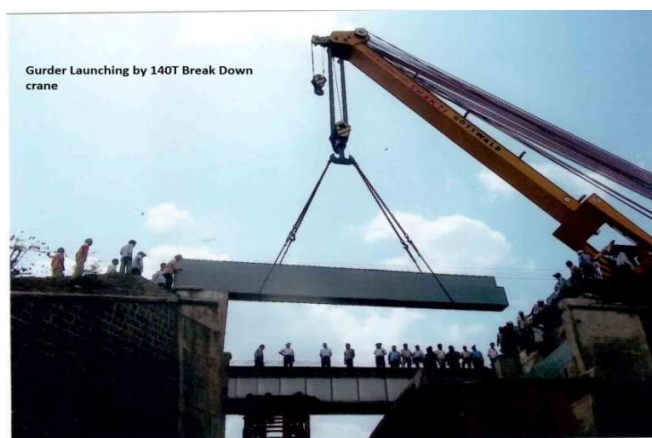
## Working of Brake down staff for rescue and restoration



Coach cutting trial by Break down staff for rescue operation



Coach cutting trial of Break down staff for rescue operation



Gurder Launching by 140T Break Down crane



**RATLAM**



**NEEMUCH**



**UJJAIN**



**INDORE**

**Heritage Preservation**



**Heritage Preservation-Parachute type water column**



**Portable pit lights innovated by Coaching Depot-IND**



Center Pivot mounting Gadget innovated by Down yard-RTM for ROH of BCNHL

2014/06/25



**Washer Extractor of Mechanized Laundry**



**Tumbler Dryer  
of mecahnized  
laundry IND**



**Flat Work Ironer (Calandring machine) of  
Mechanized laundry IND**

## Mechanized Cleaning on Pit line



Mechanized Cleaning of Primary maintained trains



Mechanized Cleaning of Primary maintained trains



Mechanized Cleaning of Primary maintained trains



Mechanized Cleaning of Primary maintained trains



Mechanized Cleaning of Primary maintained trains



Mechanized Cleaning of Primary maintained trains

## ROH of BCNHL Wagons at Down Yard RTM



Test Axle having cut mark of 5mm depth at different location for Calibration of Ultrasonic Flaw detection machine



# Running Room Chittorgarh



Out side and garden area of Running Room COR



Inside View of Running Room-COR



## Running Room Chittorgarh facilities

Massage chair, Shoe polisher, Meditation room, Recreation room,,  
Computerized reception



**Facilities in Running Room-COR**