

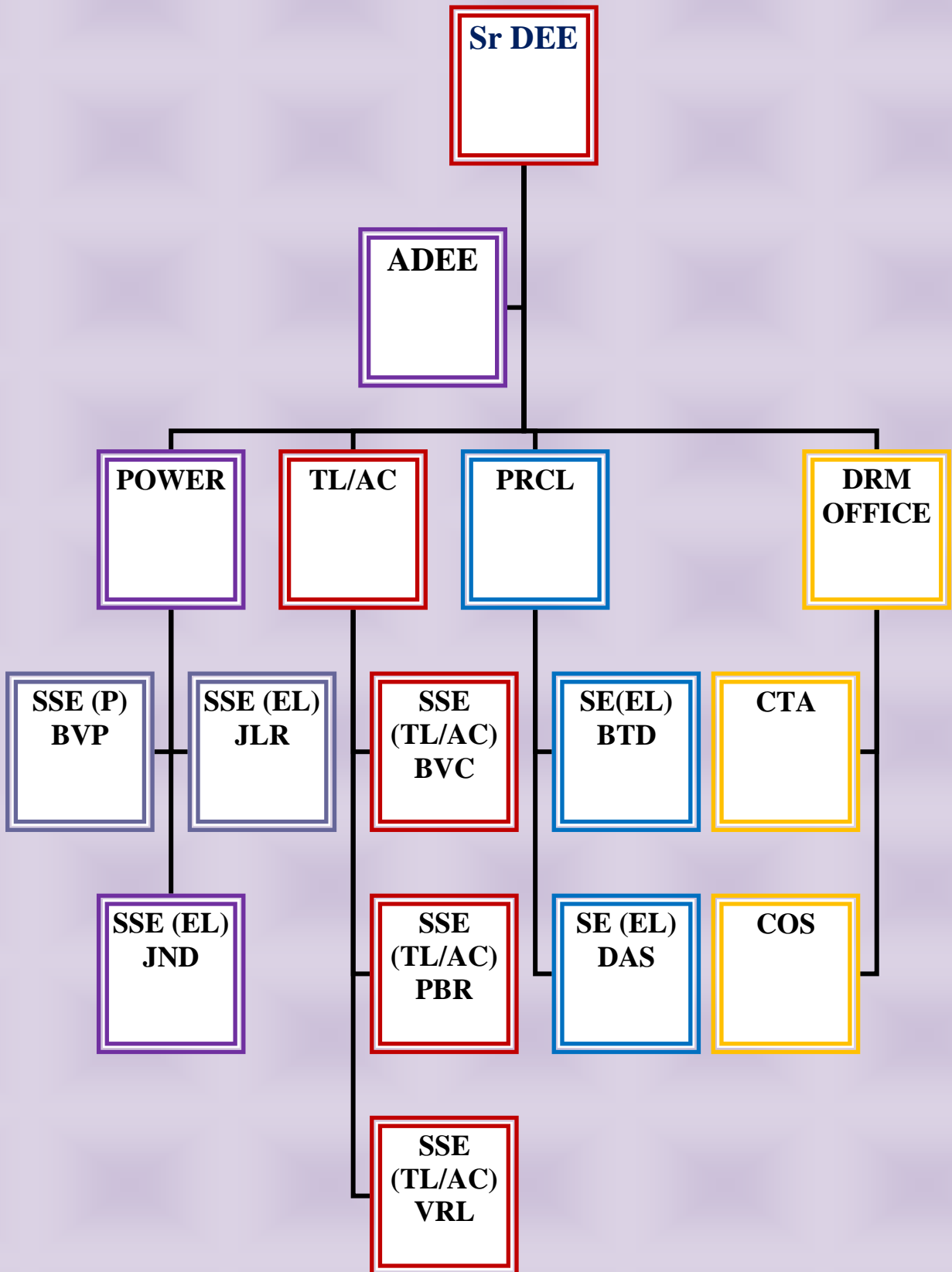
BHAVNAGAR DIVISION

ELECTRICAL
DEPARTMENT



**DRM OFFICE BUILDING BATHED IN BLUE LIGHT ON
CELEBRATION OF “WORLD AUTISM DAY”**

ORGANIZATION CHART



ASSETS / HOLDING : General Services [Power] :

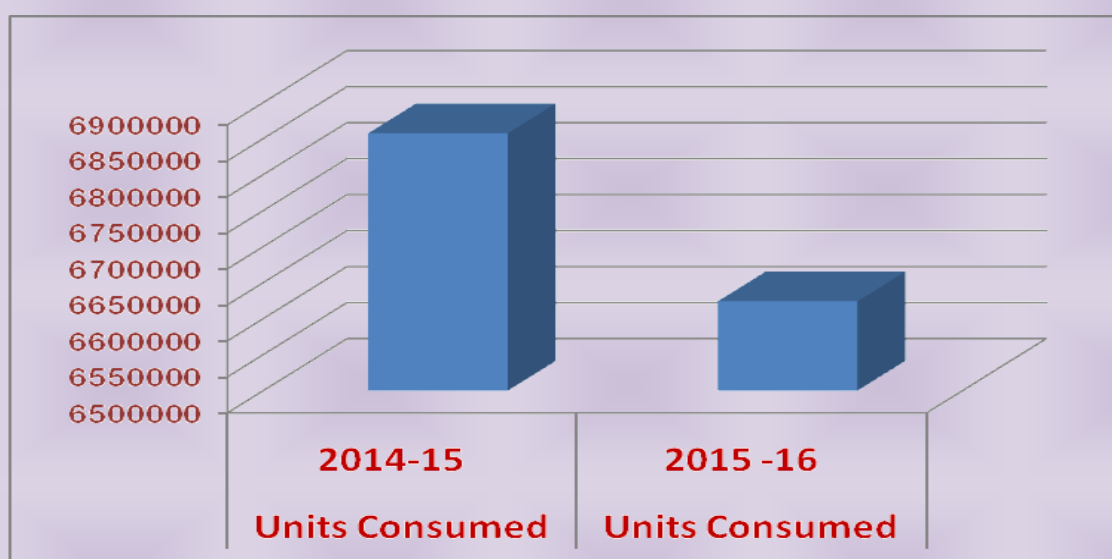
Sr. No.	Description of Installations	No. of Installations
1	Total connected load	10059 KW
2	Total Energy Consumption - Apr'15 to Mar'16	6624030 KWH
3	Average monthly consumption (2015-16)	552002 KWH
4	Energy Consumption (Mar'16)	446674 KWH
5	Energy Bill Payments (Mar'16)	Rs. 29,73,193/-
6	LT Connections	504 Nos.
7	HT Connections	05 Nos.
8	Total C.D of HT point	1020 KVA
9	Electrified railway stations	141
10	Electrified manned LC gates	312
11	No. of Staff Qtrs - Electrified	6699
12	No. of light points	53339
13	No. of fans	12126
14	No. of Electrical Pumps	92
15	No. of Water Coolers – Passenger Amenity	62
16	No. of Water Coolers – Staff Amenity	27
17	No. of A.C. units	178
18	No. of Refrigerators	53
19	No. of Diesel Generator Sets for Stations	17
20	No. of Portable DG Sets	57
21	No. of APFC Panels	14
22	No. of High Masts	20

POWER SUPPLY SYSTEM

Power supply of BVP division is taken from PGVCL & UGVCL of GSEB.

The details of monthly HT & LT Energy consumed are as under :

2014-15	2015 -16	% Saving w.r.t. last year same period
Units Consumed	Units Consumed	Savings
6857438	6624030	3.40 %



BACK-UP POWER SUPPLY ARRANGEMENT (For UTS & PRS) :

Sr		Rating (KVA)	Holding (Nos)
1	Diesel Generator Sets for Stations	15	08
2		40	02
3		62	06
4		160	01
5	Portable DG Sets for PRS/UTS	2.0	57
		TOTAL	74

Electrical Pumping Installations:

<i>Sr. No.</i>	<i>Section.</i>	<i>No. of Sumps</i>	<i>No of bore</i>	<i>No of well</i>	<i>Total No of Pumps</i>
1	BVP	6	7	6	19
2	BTD	3	7	1	11
3	DLJ	2	4	1	7
4	JLR	6	12	1	19
5	JND	0	17	2	19
6	VRL	4	3	3	10
7	PBR	2	4	1	7
	TOTAL	23	54	15	92

Details of Over Head Track Crossing Over BVP Division :

Sr	Line Volt KV	No of X'ings MG	No of X'ings BG	Remarks
1	11	31 *	16 *	<i>*16 Nos To be converted to UG on availability of funds, available only on PBR-KNLS section (BG)</i>
2	11 (UG)	30	91	
3	33	00	01	
4	66	20	41	
5	132	04	12	
6	220	02	10	
7	400	00	04	
	Total	87	175	Total 262 X'ings (OH & UG)

COACHING MAINTENANCE:

There are three coaching depots located at Bhavnagar, Porbandar & Veraval. The VRL depot is also used for Maintenance of MG Coaches.

Details of Rakes and Coaches Maintained at various Coaching Depots:

[A] Primary Maintenance (T/L) :

Sr. No	Maintenance Depot	No. of Rakes Maintained			No. of Coaches Maintained (As per Block rake)		
		BG	MG	Total	BG	MG	Total
1	BVC	14	00	14	161	00	161
2	VRL	08	11	19	114	59	173
3	PBR	14	00	14	192	00	192
	Total	36	11	47	467	59	526

Primary Maintenance (A/C) :

Sr. No	Maintenance Depot	No. of Rakes Maintained			No. of Coaches Maintained (As per Block rake)		
		BG	MG	Total	BG	MG	Total
1	BVC	6	-	6	15	-	15
2	VRL	8	-	8	20	-	20
3	PBR	8	-	8	27	-	27
	Total	22	-	22	62	-	62

[B] Secondary Maintenance (T/L) :

Sr. No	Maintenance Depot	No. of Rakes Maintained			No. of Coaches Maintained (As per Block rake)		
		BG	MG	Total	BG	MG	Total
1	BVC	1	-	1	17	-	17
2	VRL	1	-	1	18	-	18
3	PBR	-	-	-	-	-	-
	Total	2	-	2	35	-	35

Secondary Maintenance (A/C)

Sr. No	Maintenance Depot	No. of Rakes Maintained			No. of Coaches Maintained (As per Block rake)		
		BG	MG	Total	BG	MG	Total
1	BVC	1	-	1	4	-	4
2	VRL	1	-	1	3	-	3
3	PBR	-	-	-	-	-	-
	Total	2	-	2	7	-	7

[C] STR Maintenance (T/L)

SN	Maintenance Depot	No. of Rakes Maintained			No. of Coaches Maintained (As per Block rake)		
		BG	MG	Total	BG	MG	Total
1	BVC	-	-	-	-	-	-
2	VRL	11	-	11	130	-	130
3	PBR	-	-	-	-	-	-
	Total	11	-	11	130	-	130

STR Maintenance (A/C)

SN	Maintenance Depot	No. of Rakes Maintained			No. of Coaches Maintained (As per Block rake)		
		BG	MG	Total	BG	MG	BG
1	BVC	-	-	-	-	-	-
2	VRL	8	-	8	25	-	25
3	PBR	-	-	-	-	-	-
	Total	8	-	8	25	-	25

PERFORMANCE OF AC/TL COACHES :

PERFORMANCE	TL COACHES		AC COACHES	
	2014-15	2015-16 (up to Mar'16)	2014-15	2015-16 (up to Mar'16)
Ineffective Percentage of AC & TL coaches	0.11% (Target 1.5%)	0.05% (Target 1.5%)	0.55% (Target 1.25%)	0.43% (Target 1.25%)
Punctuality Loss cases in AC & TL coaches	02 Cases	01 Cases	02 Cases	02 Cases
IOH of coaches	182 Coaches	246 Coaches	21 Coaches	30 Coaches

Achievements of 2015-16 :

- a. The DRM Office, BVP & Railway Hospital, BVP both the service buildings have been awarded Second prize in Office Building Sector & Hospital sector respectively at the National Energy Conservation Award 2015 on 14.12.2015 organised by BEE (Bureau of Energy Efficiency) at New Delhi.
- b. ISO 50001-2011 have been awarded for Energy Management system of DRM office, Bhavnagar on 31.08.2015.
- c. Energy audit for DRM office, Railway Hospital & Pumping installations at BVP have been completed by BEE accredited Energy auditors on 25.08.15.
- d. The total energy saved due to implementation of short term measures works out of 8420 units (Up to Feb-16), as compare to last year 2014-15(Up to Feb-15). The amount saved is Rs. 56,414/-.
- e. As per Rly Board guidelines BEE's 3 Star Rating for DRM Office awarded during 2011-12. Further applied for 5 Star rating during current FY-2015-16 & under process.
- f. The payment of energy bills of all HT & LT points of the division are being made through ECS.
- g. PCs with railnet connection have been provided at 03 TL/AC depots & at 03 Power depots.
- h. PRCL has agreed to give Rs. 25 Lakhs for LED light/ Solar panel for making BOTAD/ DHOLA JN station green station during the current financial year 2015-16 under CSR, the work of providing 15 KWP Solar panel at BOTAD will be completed by Mar' 16.

- i. Out of the 41 stations which have been provided with signaling panels, the following 31 stations have been automated on Signaling system for 70%-30% Platform lighting at BHAVNAGAR PARA, SHIHOR JN, DHOLA JN, DHASA, DAMNAGAR, LILIYA MOTA, SAVARKUNDLA, SONGAD, VERAVAL, SOMNATH, JUNAGADH, GONDAL, JETALSAR, ADRI, MALIYA HATINA, SHAPUR, KESHOD, BAVLA, CHORWAD, LALPUR, PALITANA, VARTEJ, RANPUR, LIMBDI, NINGALA, RIBDA, WADHWAN CITY, CHUDA, BHAYAVADAR, UPLETA & WANSJALIYA.
- j. The cumulative consumption of electrical energy up to Mar'16 is 6624030 units as compared to 6857438 units for corresponding months of last year i.e. 2014-15, which has resulted in cumulative saving of electrical energy of 233408 units amounting to Rs. 15.54 Lakhs. This saving of 233408 units is about 3.40% as compared to same period last year.
- k. Up to MAR'16, this department has disposed off 18.7 Tonnes of scrap for FY-2015-16.
- l. Segregation of balance 800 Qtrs is under process & PGVCL have agreed in principle to segregate them, which are located at BVP area only.
- m. The PF rebate for the period from April'15 to MAR'16 is Rs. 2,34,428/- for maintaining PF more than 0.95 in HT connections.
- n. The Solar cum wind hybrid system of 5.5 KW capacity provided at SOMNATH station in April'15.
- o. Old batteries of 27 PRS/ UTS over the division replaced to have back up power supply of more than 1½ hour, Total 330 batteries have been replaced.

Some of the initiative undertaken in Pictures :-

1. LED Station Name Board have been provided at important stations of Bhavnagar Division like Bhavnagar Terminus, Botad, Dhola, Porbandar, Somnath, Junagadh, etc.



2. The Solar cum wind hybrid system of 5.5 KW capacity provided at SOMNATH station in April'15.

3. DRM Office, Bhavnagar Para has been awarded Second Prize in the National Energy Conservation Award 2015 for Office Buildings by Ministry of Power, New Delhi.

ENERGY CONSERVATION DAY

14TH DECEMBER 2015

ऊर्जा बचाने की संस्कृति का करे विकास।
उज्ज्वल होगा भविष्य और घर-घर प्रकाश।।

नजर रखे पैनी कि ऊर्जा बचती रहे।
उपयोग करो ऐसे कि ऊर्जा मिलती रहे।।

उचित तकनीक उचित रखरखाव।
ऊर्जा संरक्षण से चमकेंगे शहर और गाँव।।

**HELP
CONSERVE
ENERGY...**

**TURN OFF
LIGHTS
WHEN
LEAVING**



ENSURING SAFE WORKING PRACTISE & ENVIRONMENT



याद रखें
सुरक्षा जीवन
का अर्थ है,
सुरक्षा के बीना
सब व्यर्थ है।

NO JOB
IS SO IMPORTANT
& NO SERVICE IS
SO URGENT
THAT WE CANNOT
TAKE TIME TO
PERFORM OUR WORK
SAFELY

PRACTICE IT!
**KNOWING
SAFETY
IS NOT ENOUGH**

A purple square with a white glow in the center, containing the word "END" in a dark blue, serif font. The bottom-right corner of the square is folded over, creating a 3D effect. The square is centered on a light purple background with a dashed white border.

END