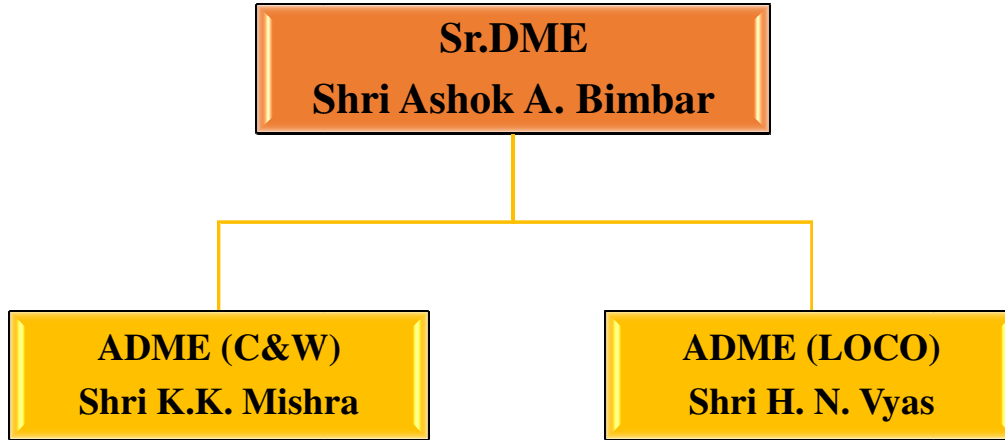


ORGANISATION STRUCTURE



HIGHLIGHTS

1. C&W WING

- a) CCTV camera with internet connectivity has been installed in laundry JND for better online monitoring of activities from division and HQ office.
- b) Mechanized Laundry of 01-ton capacity (1000 Bedrolls per shift (Phase-II)) has been awarded to M/sStefab India Ltd. Delhi and all Machines & equipment received at JND on 18.04.13 and commissioned on 28.12.13.
- c) 13 MG coaches have been condemned over BVP Division and handed over to stores during
- d) 2014-15. 12 MG overage coaches have been condemned & handed over to stores during 2015-16.
- e) In house screen printing of destination board has started in BVC, VRL& PBR coaching depot. These screen printing are more glowing & durable.
- f) Laundry machines are under AMC through OEM for 5 years i.e up to 2020.
- g) ETP has been installed and commissioned at Junagadh laundry since Dec'15.
- h) For immediate redressal of passenger complaints in trains having OBHS facility, a web application "Clean my coach" has been introduced on 26.1.16.

2. LOCO WING

- a) All the 32 LPs (Goods) HQed at BTD have been trained in WDG-4 (EMD). This has improved freight loading and availability of WDG-4 Hand LPs on crew turns out at BTD.
- b) Out of 79 LPs (Mail/Exp. & Pass) 75 have been imparted practical handling training of WDG-04 Loco for yard shunting. Remaining 04 LPs will be covered in due course as per the training programme issued by HQ office.
- c) Earlier at PPSP shunters were not competent for WDG4 Loco. So crew used to do shunting works. Now the entire 05 LP (Shtg.) posted at PPSP have been imparted practical loco handling training of WDG-4 Locos. This has improved utilization of crew working freight trains hauled by EMD Loco ex. PPSP.
- d) Highest DSL utilization of 767.6 achieved on Date 25.03.16 for the month against given target 455 i.e. 68.70% high.
- e) CCTV camera with internet connectivity has been installed in loco lobby-BVC, BTD & JND for better online monitoring of breath analyzer test and other activities from division and HQ office.
- f) LED based TSR Boards have been displayed at BVC, BTD & JND lobbies for at a glance information & guidance of crew.
- g) Smart TV monitor display have been provided at BVC, BTD and JND lobbies, displaying various technical and safety instructions for information and guidance of crew.
- h) Gluco Meter & Blood pressure measuring equipment have been procured for RR-MHV, DAS, VRL & PBR. Thus the recommendation of running room improvement committee has been complied by the division.
- i) Contract for complete Management of Running Room including Maintenance and Subsidized meal at RR-VRL is awarded to Devika Construction, Botad for Two Years. LOA is issued on 26.02.2016.

CADRE POSITION OF C&W DEPARTMENT

CATEGORY	SANCTION	ACTUAL	VACANCY
SUPPERVISOR	62	50	12
GROUP C	197	140	57
GROUP D	320	263	57
TOTAL	579	453	126

1. BROAD GAUGE: -Following BG trains run over BVP division.

Depot	Sr. No.	Train No.	From	To	No of Coach	No of Rake	Frequency	Type of Examination
PBR	1	59212	PBR	RJT	8	1	Daily	PM
	2	59214	PBR	BNVD	7	1	Daily	PM
	3	19216	PBR	MCT	17	3	Daily	PM
	4	19263	PBR	DEE	20	1	Bi-weekly	PM
	5	12905	PBR	HWH	16	3	Tri-weekly	PM
	6	19202	PBR	SC	16	1	Weekly	PM
	7	19269	PBR	MFP	20	2	Bi-Weekly	PM
	8	59297	PBR	VRL	08	1	Daily	PM
	9	12949	PBR	SRC	18	1	Weekly	PM
	10	19262	PBR	KCVL	18	1	Weekly	PM
	11	59206	PBR	KNLS	7	1	Daily	STR
	12	59216	PBR	BNVD	7	1	Daily	STR
	13	19572	PBR	RJT	9	1	Daily	STR
BVC	1	12972	BVC	BDTS	21	2	Daily	PM
	2	19260	BVC	KCVL	18	1	Weekly	PM
	3	59204	BVC	SUNR	9	1	Daily	PM
	4	59202	BVC	PIT	9	1	Daily	STR
	5	59272	BVC	SUNR	9	2	Daily	PM
	6	59230	BVC	DHG	9		Daily	STR
	7	59270	BVC	PIT	9	3	Daily	STR
	8	59296	BVC	PIT	9		Daily	STR
	9	59225	BVC	MHV	9	3	Daily	PM
	10	59228	BVC	BTD	9		Daily	STR
	11	59234	BVC	SUNR	9	2	Daily	STR
	12	59207	BVC	OKO	8		Daily	PM
	13	59268	BVC	PIT	8	1	Daily	STR
	14	17203	BVC	CCT	17		Weekly	SM
	15	12942	BVC	ASN	22	1	Weekly	PM
	16	19204	BVC	BDTS	22		Weekly	PM
	17	22936	PIT	BDTS	18	1	Weekly	PM
	18	19579	BVC	DEE	5	1	Weekly	PM
VRL	1	19222	VRL	ADI	17	6	Daily	PM
	2	11463	VRL	JBP	21	4	Daily	SM
	3	16333	VRL	TVC	21	1	Weekly	SM
	4	59224	VRL	RJT	10	1	Daily	STR
	5	59222	SMNH	RJT	10	1	Daily	STR
	6	19120	SMNH	ADI	10	1	Daily	STR
	7	59460	VRL	RJT	20	1	Daily	STR
	8	11087	VRL	PUNE	17	1	Weekly	STR
	9	59298	VRL	PBR	8	1	Daily	STR
	10	19251	SMNH	DWK	15	2	Daily	PM
	11	59508	SMNH	RJT	11	1	Daily	STR

* PM- Primary Maintenance

* STR – Safe to run examination.

1.1 BROAD GAUGE: PM/SM OF COACHES

Distribution of rakes maintained: -

Depot	Based for primary Maintenance		Daily Primary Maintenance		Secondary Maintenance (BG)		Daily Plat form return train	
	Rakes	Coaches	Rakes	Coaches	Rakes	Coaches	Rakes	Coaches
PBR	14	254	4	48	-	-	3	23
BVC	14	201	4	40	1 weekly	22	7	62+7 (weekly)
VRL	8	154	2	32	1-weekly	21	5+1 weekly	58+17 weekly
TOTAL	36	609	10	120	2	43	15+1 (weekly)	143+24 (weekly)

1.2 METER GAUGE: -

Depot	Based for primary maintenance		Daily Primary maintenance	
	Rakes	Coaches	Rakes	Coaches
VRL	11	67	3	25
TOTAL	11	67	3	25

1.2.1 All these MG trains are plying in isolated VRL-VSW-DAS circuit and maintained in the C&W depot-VRL. The MG section i.e. ADI-BTD is purely controlled by ADI division for the purpose of maintenance of rolling stock.

2. MAINTENANCE INFRASTRUCTURE - GOODS:

There is no freight train examination depot over MG & BG section except MG departmental stocks which are given periodical examination at JLR depot.

3. MECHANIZED CLEANING & OBHS -

All coaches (BG) of BVP Division are being cleaned through Mechanized Cleaning Contract. OBHS is working in Train No. 19269, 19263 & 12905, 19222, 12941 and 19260.

4. MECHANIZED LAUNDRY

A Mechanised laundry of 500 bedrolls per shift capacity has been started at JND over BVP Division from 30.04.12, and commissioned on 05-09-12 Mechanized Laundry of 01-ton capacity (1000 Bedrolls per shift (Phase-II)) has been commissioned on 28.12.13 by M/s. Stefab India Ltd. Delhi. Operation of this laundry has been out sourced and work started from 20.05.13.

5. PEST & RODENT CONTROL

This work is done by specialized agency i.e. M/s HPC Corp. -Ahmedabad. The contract has been awarded to the firm for three years for BVC, PBR and VRL coaching depots from 01.03.2015.

1. COACHES: - MAINTENANCE INFRASTRUCTURE – COACHES Pit line MG/BG

Depot	No. of pit line	Type	Length	Capacity
PBR	1	BARAUNI	540 Meters	24
BVC	2	CAMTECH	595 Meters	26
VRL	1 BG	CAMTECH	595 Meters	26
	1 MG	CONVENTIONAL	210 Meters	10

2. HIGHLIGHTS OF PERFORMANCE:

Sr. No.	ACTIVITIES	Target	2014-15	2014-15 up to Mar- 15	2015-16 up to Mar - 16
(A) Coaching (BG)					
a.	Avg. % of ineffective coaches	0.1	0.09	0.22	0.27
b.	Avg. detachment of coaches	-	0.08	0.08	NIL
c.	IOH of Coach (Avg.) per month	-	28	28	29
d.	Spl. lift (Avg.) per month	-	5	5	2
e.	Loss of Punctuality	-	0.33	0.33	0.25
(B) Coaching (MG)					
a.	Avg. % age of ineffective	1.0	0.58	1.13	0.51
b.	Avg. detachment of coaches	-	NIL	NIL	NIL
c.	'C' schedule (Avg.)	-	7	7	6
d.	Loss of Punctuality	-	NIL	NIL	NIL

3. PERFORMANCE REVIEW - LOCO (BG):

Sr. No.	Description	Target 2015-16	14-15 up to 31.03.15 (Average)	15-16 up to 31.3.16 (Average)	Variation in % With respect to Last Year	Variation in % With respect to target
1.	Loco outage	8.5	11.4	10.5	-0.9	23.52
2.	Loco utilization	455	520.3	535.6	-15.3	17.71
3.	Loco failure	-	ST MG 03 BG 16	ST MG 05 BG 29	MG 02 BG 13	-
4.	HSD Consumption (BTD & JLR RCD)	-	94.7 KLS Per Day	85.5 KLS Per day	-	-
5.	Loss of Punctuality (HQ level)	-	0.1 %	1.0%	-	-
6.	Monthly average fortnight hours of crew BTD	104	92.7	89.4	4.94	-14.03
7.	Implementation of 10 Hrs. rules	More than 90%	93.5	85.6	10.01	-4.88

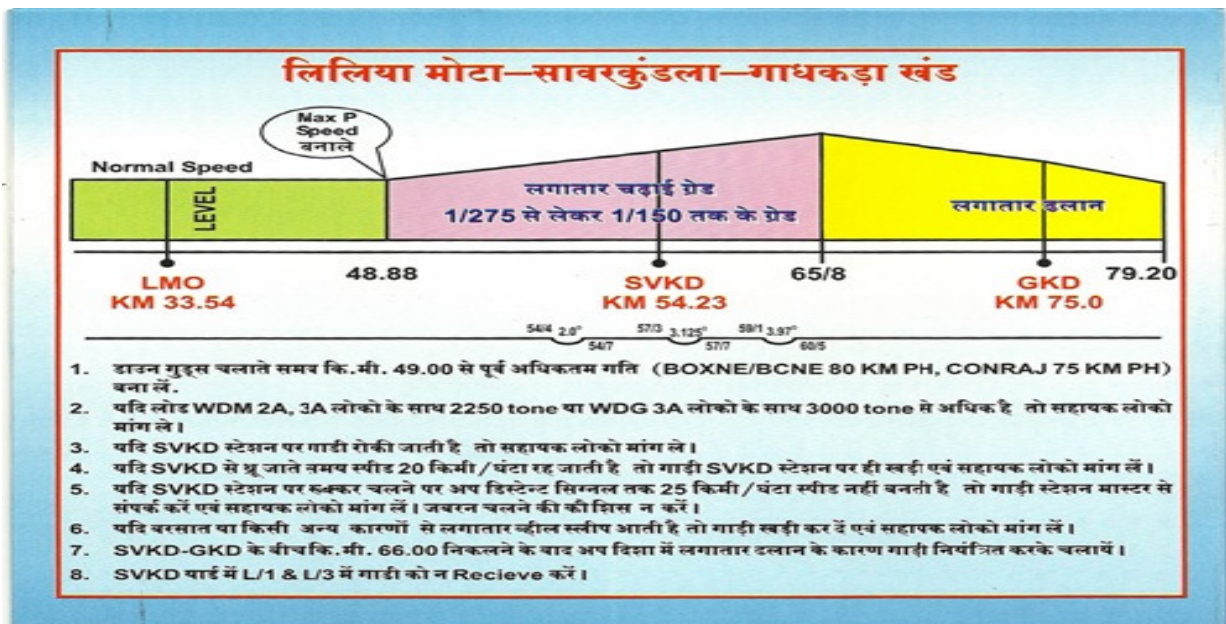
4. STALLING CASE – ANALYSIS

April-14 to March-2015				April-2015 to March-2016			
Section	No. of train run	Stalling Cases	Stalling cases % age	No. of train run	Stalling Cases	Stalling cases % age	% Variation with last year cases (Improvement)
PBR-KNLS	158	0	0	205	0	0	0
PPSP-SUNR	6759	12	0.17	5972	2	0.03	83.33%
VRL-BKNG	356	1	0.28	337	1	0.29	0
BVC-SUNR	301	0	0	302	0	0	0
TOTAL	7574	13	0.17	6816	3	0.04	76.92%

There is improvement of 76.92% in stalling cases the numbers of trains have decreased by 758 only but outage has increased by 23.52%. Stalling cases have been minimized which shows improvement to previous year.

5. ACTION PLAN

- LPs involved in frequent stalling cases are being vigorously monitored/ counselled by their nominated CLIs. Moreover, LPs are sent to SIMULATOR training for improvement in driving skill.
- LPs have been instructed to ask for banking loco from originating station if load exceeds than maximum permissible load.
- In case of wheel slipping, LPs are counselled not to try again and again to avoid wheel burn/scabbing of rail and demand banking loco.
- All LPs have been supplied pamphlets of instruction/ guidance for train working over stalling prone zone /rising gradients as under.



6. FUEL INSTALLATION

Sr. No.	RCD	NOS. OF TANKS	CAPACITY OF TANKS	Avg. Issue /Day
1	BTD	04	280 KLs	58.9KLs.
2	JLR	03	210 KLs	27.6KLs.
	TOTAL	07	490 KLs	88.5 KLs.



RCD-BTD



RCD-BTD

7. ART/ARME

There is one "B" Class ART at BVC and one 'B' Class MG ART at JLR.

ART	Controlling in charge.	Speed.	Crane Capacity
BVC (BG)	SSE (C&W)	100 Kmph	-
JLR (MG)	SSE(LOCO)	50 Kmph	-



8. ART/JLR

ART BVC

ARME	Controlling In-Charge	Type of Coach	Speed
BVC	SSE(C&W)-BVC	ICF	110 KMPH
JLR	SSE(Loco)-JLR	ICF	75 KMPH
PBR	SSE(C&W)-PBR	ICF	110 KMPH

9. CATEGORISATION OF LOCO PILOTS:

Re-categorization of loco Pilot has been done as per latest guideline from Railway Board (Revision-I) vide HQ office letter No. SFT/5/18/86 Gradation dated 27.08.2009.

	“A”	“B”	“C”	“D”	Total
Total Loco Pilots = 110					
Category (Gradation as on 31.03.2016)	72	30	08	Nil	110

10. RNNING ROOM:

Sr. No.	Station	Capacity	Controlling Supervisor	Classification	Subsidized Meal
1	VRL	16 Beds	FIC-VRL	C	Provided
2.	MHV	10 Beds	JE-I (C&W)-DAS	C	Provided
3	DAS	12 Beds	JE-I (C&W)-DAS	C	Provided
4	PBR	20 Beds	SSE(C&W)-PBR	B	Provided

Running Rooms MHV &VRL



11. DIESEL SHED (SETTELITE)-JLR

There are total 13 MG YDM-4 locos based at JLR to run a loco link of 09 locos and one loco for department use on ballast train. Up to M-12 schedule of these locos are carried out at JLR and above M -12 are carried out at home shed SBI.



12. LOCO (MAINTENANCE & RUNNING)

Loco organization is headed by Sr. DME-BVP at Divisional level. He is assisted by AME (Loco) and AME(C&W) in day-to-day working.

13. CADRE POSITION (NON RUNNING)

CATEGORY	SANCTION	ACTUAL	VACANCY
SUPPERVISOR	09	07	02
GROUP C	59	35	24
GROUP D	53	47	07
TOTAL	121	89	32
DSL SHED SBI Gr. 'C'	*33	33	00
DSL SHED GR. D	*24	16	08
TOTAL	57	49	08
GRAND TOTAL	178	138	40
*Cadre of Satellite DSL shed (MG) is under control of Sr.DME(DSL)-SBI			

14. CADRE POSITION OF LOCO (SUMMERISED)

CATEGORY	SANCTION	ACTUAL	VANCANY
Running Sup. (CLI/LI)(PCR/CCR)	19 (Non PRCL) 09 (PRCL)	11 05	08 04
Running	292	248	44
Non-Running	178	138	40
TOTAL	498	402	96