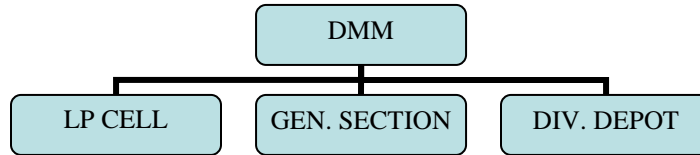


# STORES

## 1 ORGANISATION

The Organisation chart is given below.



## 2 **Assets & Activities:** Divisional Stores Depot – Rajkot was set up in 1991-92.

The following sections are working under DMM

- (i) LP Cell: it is catering to all the purchase work of stock & non-stock items required by RJT division.
- (ii) General Section: all the work pertaining to general branch of DRM office is being done in this section.
- (iii) Divisional stores Depot: this is catering to the supply of all the consumable items, stationery items, Books & Forms items & money value items required by the Division. Consumables are collected by this depot from Dy. CMM/SBI and supplied to various divisional consignees.

## 3 **Uniform Items: Main depot- SBI**

**Supply position of Uniforms in brief:**

SN	Year Season	Compliance Percentage	
		As per item	As per quantity
1	Summer 2015	100	100
2	Winter 2015-16	100	100
3	Summer 2016	100	100
4	Winter 2016-17	100	100

#### 4 Local Purchase

1.4.14 to 31.3.15		1.4.15 to 31.3.16		1.4.16 to 30.11.16	
No.of items	Amount	No.of items	Amount	No of items	Amount
589	1,96,61,434/-	402	1,73,86,991/-	297	1,47,81,193/-

#### 5 Scrap disposal

Item	Actual 2014-15	Actual 2015-16	Target 2016-17	Actual 2016-17 (up to Aug.)	Reasons for short fall
Scrap disposal (in MT)	2370.742 MT	2086.645 MT	Yet not received from HQ	1472.70 MT	.--